

ROOTS AND SHOOTS



November 2009, Volume 25, Issue 11

Holiday Dinner, Election, Speaker, and Door Prizes on November 30

Our annual holiday meeting, which is the last general meeting of the year, will be held on Monday, November 30, at 6:30 p.m. at St. Marks United Methodist Church. The address of the church is 100 N. Highway 46 Bypass in Bloomington. We will have a pitch-in dinner, a speaker, and door prizes, as well as a brief business meeting featuring the election of officers. For the dinner, the refreshment committee will provide meat and cheese trays, bread, and drinks. Members bring their favorite salads, side dishes, and desserts. Remember to plan a dish that does not contain any form of peanuts.

By
Vicky
St.
Myers

In order to be more green and cut down on waste, we are asking everyone to bring their own reusable plate, cup, and silverware that can be taken back home. A very important alert for food brought to St. Marks is **that we must not bring any peanuts in any form into the building.** This would also include anything containing peanut oil or anything cooked in peanut oil, such as chips or other snacks. A child in the congregation at St. Marks has a severe peanut allergy, and we don't want to cause any emergencies by anything we bring into the church.

Please RSVP if you plan to attend, and let us know what dish you plan to bring to share. RSVP to Vicky St. Myers at vstmyers@hotmail.com or 812-219-4734 by Sunday, November 25. Please plan to join the festivities.

Coming Soon—2010 Garden Fair

The coordinating committee for our 2010 garden event is arranging committees and working out many preliminary details. They report that the date of the 2010 Garden Fair will be on Saturday, May 1, at the National Guard Armory on South Walnut Street. Tentative plans include several education mini-classes, commercial and non-profit vendor booths, a café, a raffle and a Master Gardener information booth.

By
Nancy
White

Plans will be formalized during the late fall weeks and winter months. Since these are times when outside garden volunteer opportunities are limited, the committee urges members to join the working groups now. Don't miss this chance to gain some winter hours and to get to know some new MG friends. Contact any member of the Garden Fair coordinating committee for more information. They are Diann Lock, Jeff Schafer, Vicky St Myers, and Nancy White. If you signed up to volunteer at the September general meeting, you will be contacted soon about committee work. Do you know some vendors or non-profits that might be interested in booth space? If so, contact Vicky St. Myers.

Have you renewed your MCMGA membership? *Folia and Flora* comes out soon, and to be included, you must have paid yearly dues. Membership renewal forms are available online at www.mcmga.net and at the extension office.

Member News

A local resident has donated a large night blooming Cereus which is a tropical plant that needs to winter inside. It does best outside in summer, and the owner reports that it blooms regularly. If you can adopt this plant, contact Nancy White or Amy Thompson



By
Nancy
White

Holiday Dinner and Meeting on Monday, November 30

Our upcoming holiday dinner and meeting on Monday, November 30 will be an opportunity for MGs to join the green movement. To cut down on waste from paper and plastic tableware, please plan to bring your own table service, including cups and glasses. Thanks in advance for helping us conserve our environment.

Bloomington in Bloom Completes Fall Activities and Gears Up for Spring 2010

Bloomington in Bloom committees have reported great success with their fall activities and are already planning for 2010. The color theme for the America in Bloom competition is “Red, White, and U”, and the community is encouraged to include red and white in their spring plantings and to utilize limestone in planters, walls, walkways and other garden hardscape. Local nurseries will be providing a variety of choices of red and white flowers, so we will have lots of variety from which to choose next spring.

New MCMGA Community Brochure and Stationery

MCMGA Board members are discussing a new MCMGA brochure being designed for use in publicity and for information sharing about our organization. As soon as it is available, you will be notified so that you can help us distribute this in the community. MG Secretary, David Dunatchik, is designing a new letterhead for stationery, note cards and other office needs that will incorporate our county logo. We appreciate David’s work and board members’ work on these important tasks.

Idea for Locating Spring Bulbs

From *Horticulture Magazine* comes this creative idea for bulb markers that bloom! When planting your bulbs, try planting grape hyacinths (muscari) around the perimeter of the hole or grouping. In the spring the hyacinth foliage will appear early and remind you that other bulbs are in that area.

Avoid Using Fertilizer in Fall Plantings

Also from *Horticulture*: As we are planting some fall shrubs, perennials, and trees, remember to amend the soil with whatever products you use in your particular soil. Compost works well as do shredded leaves that are not diseased. Avoid using fertilizers when planting in the fall, because the fertilizers will stimulate a flush of new growth that will not have time to harden before winter cold. And be sure to continue to water these new plantings until the ground freezes.

New Certified Master Gardeners

Three interns have completed their requirements and are certified Master Gardeners! We welcome Evelyn Harrell, Bill Anderson, and Vicky Thompson and honor them for their service. Congratulations!

2010 MCMGA Slate of Officers

Once again, it is time to elect officers for our MCMGA board of directors. Our bylaws state that this year, the offices of vice president for programs, treasurer, journalist, and director of records are to be elected. The election will take place at our Monday, November 30 holiday dinner and meeting, and nominations will be accepted from the floor. The following have been recommended by the nominating committee to fill these positions.

By
Nancy
White

Vice President for Programs

Vicky St Myers completed her Master Gardeners intern training in 2006 and is now at the advanced level. She serves on committees for Bloomington in Bloom and the 2010 Garden Fair and volunteers at the Demo Garden, Wylie House, and the Coverdale Garden at Karst Farm Park.



Vicky
St. Myers

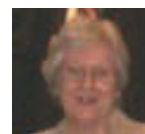
Treasurer

Diana Young is a long-time resident of the Unionville area, was in the intern class of 1998, and currently is at the bronze level. Diana delights in flowers of all kinds, especially daylilies, and is known by all for her heirloom seed activities. She volunteers at the Demo Garden and the Monroe County Fair.



Diana
Young

Helen Hollingsworth has resided for many years in the Elm Heights neighborhood where her gardens flourish. She received her intern training in 2000 and has reached the silver level. Helen volunteers for the annual Bloomington Summer Garden Walk, is a presenter on hardscaping, and serves as editor for *Roots and Shoots*.



Helen
Hollings-
worth

Journalist

Dan Nichols was in 2005 intern class. He currently is at the certified level. Dan is interested in early seed starting and volunteers at Wonder Garden, Monroe County Fair as a vegetable judge, and at the Demo Garden.



Dan
Nichols

Director of Records

Dan Nichols was in 2005 intern class. He currently is at the certified level. Dan is interested in early seed starting and volunteers at Wonder Garden, Monroe County Fair as a vegetable judge, and at the Demo Garden.

Volunteer at WFIU Fund Drive

MC Master Gardeners will be answering the phones at the WFIU Fund Drive on Sunday, November 8th, from 9:30 until 12 noon.

If you are interested in helping, please contact Preston Gwinn, 812-320-2150, or pgwinn@bluemarble.net.

Note that this activity does not count toward volunteer hours, as there is no education component.



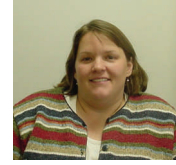
By
Preston
Gwinn

Turf 101: Why Does a November Application of Fertilizer Work?

Nitrogen stimulates increased photosynthesis, and the extra energy derived from this goes directly into growth, respiration to maintain the plant (similar to humans), or into storage.

In early November, the temperature is still adequate for photosynthesis, but cool enough to minimize respiration demands and too significant growth. Therefore, most of the extra energy derived from a November application of nitrogen is stored by the plant and not used for any type of growth (including root growth) until the following spring. Next spring, these storage products are used in green-up of the plant and more importantly, for root growth.

According to some of our earlier research, it is important for the plant to take up the nitrogen quickly in the fall and store the energy for maximum root growth next spring with a minimum of shoot growth. Though one might think that nitrogen applied early next spring would do the equivalent as November-applied nitrogen, just the opposite occurs and shoot growth is stimulated dramatically with early spring-applied nitrogen. A spring application of nitrogen will never compensate for a missed application in November.



Submitted
by Amy
Thompson

cold for

England and Its Gardens

Master Gardeners

July 1—14, 2010

Course Fee: (not including airfare)

\$3075.00 per person double occupancy

\$3600.00 per person single occupancy

International Study Abroad for Purdue

Submitted
by

Rosie
Lerner

Our adventure will visit gardens of historical and modern significance in the regions of London, The West Country, and East Anglia and will include lectures, study booklet, pre-test/post-test and course evaluation. Participants will be expected to share what they learn with others in their community upon their return.

We've planned the course for early July to hit the peak garden season and the fabulous Hampton Court Palace Flower Show. Also new to our itinerary next year, we've added visits to Blooms of Bressingham, Beth Chatto Gardens, and Hatfield House. And of course you'll have a bit of free time in London to be a regular tourist. Or, if you've been there, done that, then there are lots more garden and landscape sites, historic and contemporary to experience right in London.

As always, our priority for enrollment is Purdue MGs, but you are welcome to bring a guest. If we don't fill the class with Purdue MGs, we will open enrollment to MGs from other states.

The program flier can be downloaded from our webpage at <<http://www.hort.purdue.edu/ext/eaig/>>, but if you have any trouble downloading, don't hesitate to contact Tammy to ask that one be mailed to you.

To register for the course, contact our secretary, Tammy Goodale <tgoodale@purdue.edu> 765-494-1296 or call 1-888-398-4636 and asked to be transferred to Tammy at 41296.

WonderGarden Receives Award

In a contest sponsored by the City of Bloomington Parks and Recreation and the Bloomington Board of Realtors, Bloomington in Bloom honored outstanding gardens in several categories to stimulate public interest in beautification. There were over 70 nominations in this first year of the competition, and panels of local judges viewed each nominated property.

By
Nancy
White

At the Bloomington City Council meeting on Wednesday, October 7, WonderGarden, located at WonderLab, was honored with the first place award in the Bloomington in Bloom Commercial Property Competition in the category for non-profit organizations. Accepting the award for WonderGarden was Jeanne Gunning, WonderLab volunteer coordinator.

The garden is maintained by WonderLab staff and members of the MC Master Gardeners.

Congratulations to all who have made the WonderGarden a model for other community gardens.

Take Steps Now to Help Prevent Late Blight Next Year

Tomato and potato growers can take steps now and next spring to help prevent the reoccurrence of late blight in Indiana, said a Purdue University plant pathologist.

Submitted
by
Amy
Thompson

Late blight, a fast-moving and highly destructive disease of tomatoes and potatoes, was found in several Indiana counties this past growing season, said Dan Egel.

"We know it hit tomatoes and growers were aware of the damage, but we are not sure if Indiana potatoes were infected or how many," he said.

Egel is concerned that late blight on potato vines may have gone unnoticed. If the disease affects the tubers, the fungus can overwinter there and spread again next year.

Egel recommends growers take four steps:

- ◆ Throw away any potato seed pieces saved from the 2009 crop that were to be used next year.
- ◆ Plow under the potato crop and all vines now.
- ◆ Rotate tomatoes and potatoes to new ground when planting the 2010 crop.
- ◆ Pull volunteer tomatoes and potatoes next year.

"We normally don't worry about volunteer tomatoes and potatoes, but next year growers need to be vigilant and pull any that may come up," Egel said. "They could continue to spread late blight."

For questions and more information about late blight or steps that can be taken, contact Egel at 812-886-0198, egel@purdue.edu.

T. C. Steele Sponsors Event for Writers

Attention writers! Come learn about the tools of fiction and the art of the short story at T.C. Steele State Historic Site. Alexander Weinstein will be the Artist in Residence from November 3-15. Alexander Weinstein is the director of the Martha's Vineyard Institute of Creative Writing. A graduate of Naropa University's Jack Kerouac School of Disembodied Poetics, he has been working as a writing teacher and freelance editor for the past 10 years. He leads fiction workshops throughout the United States and Europe and currently teaches writing at Indiana University. He will be teaching two writing workshops on November 14 & 15, from 10:30 a.m. to 1:00 p.m. These workshops are aimed at writers of all abilities to strengthen their craft and learn tools to produce powerful fiction. The session on November 14th will focus on internal and external structure of your story. On November 15th participants will explore language and dialogue. The cost is \$20 per session, and spaces are limited to 20 per class. Registration is required. For more information or to register please contact tcsteeshs@dnr.in.gov or (812) 988-2785. Check us out online at www.indianamuseum.org/tc_steele.

Time to Renew Your MCMGA Membership

MCMGA 2010 dues (\$10) are due. Please take time to fill in your membership form completely so that your listing in *Folia and Flora* is complete. Send or take the form and your dues to the extension office for processing. Members who make late payment may not be included in *Folia and Flora*. If you have questions, call Mary Jane Hall 812-345-3985.



By
Mary
Jane
Hall

Fall Clean-up Helps in Eliminating Zinnia Diseases

Question: Why do zinnias in the garden develop leaf blight or mildew and decline and die?

Answer: There are two important zinnia leaf spots in Indiana, one bacterial, caused by *Xanthomonas zinniae*, and the other fungal, caused by *Alternaria zinniae*. Bacterial leaf spots are small, angular, brown spots often surrounded by a yellow margin. *Alternaria* leaf spots are larger and reddish brown with grayish centers. Both diseases result in leaf blighting, and death of foliage, and eventually plant death. Powdery mildew, covering leaves with grayish white superficial growth also causes foliage to die. Some of these zinnia diseases are seed-borne, so purchase seeds from a reliable source. Fungicides may be beneficial for powdery mildew and *Alternaria* leaf spot, but will not control bacterial leaf spot. Avoid wetting foliage while watering. Fall garden clean-up will help to reduce carry over of inoculum for next year's plantings.

By
John
Hartman,
Extension
Plant Pa-
thologist,
Univer-
sity of
Kentucky

Compost Your Leaves!

Choices are to leave the crop of fallen leaves where they land [some people run a lawn mower over them to reduce bulk], rake the leaves to the curb for city pick-up and removal, or to compost them. Composting leaves produces valuable nutrients for your soil. A shredder can reduce a pile in size. Save a few bags of leaves this fall to add to compost next spring when you'll need some brown .

By
Helen
Hollings-
worth

Volunteer Opportunities Compiled by Nancy White

Location	Time	Jobs	Contact
Hilltop Garden and Nature Center	year around	various	Greg Speicher, 855-2799 or gspeiche@indiana.edu
Bloomington in Bloom Planning Committee	year around	various	Mary Jane Hall, 824-2762 Gretchen Scott, 330-7548
MG Demonstration Garden	seasonal	various	Bethany Murray, 339-8876, bethany.murray@gmail.com
T. C. Steele SHS	seasonal	various	Davie Kean, 988-2785
Flatwoods Park Butterfly Gardens	seasonal	various	Cathy Meyer, 349,2800
MCMGA Horticulture Hotline	year around	inquiries and research	Amy Thompson, 349-2575
MCMGA Speakers Bureau	year around	various	Amy Thompson, 349-2575
MCMGA Newsletter	year around	writing, stapling, labeling	Helen Hollingsworth, 332-7313
MCMGA Web Site	year around	various	Barbara Hays, 332-4032
MG Program Committee Member	year around	plan MG programs	Vicky St. Myers, 323-7072 Jeff Schafer, 325-3130
Middle Way House	seasonal	various	Clara Wilson, 333-7404
Wylie House	year around	various	Sherry Wise, 855-6224
Mother Hubbard's Cupboard	year around	education, resource	Libby Yarnell, 355-6843
WonderLab Garden	2 times monthly	various	Nancy White, 824-4426

PLEASE WEAR YOUR NAME BADGE WHEN VOLUNTEERING.

Cooperative Extension Service
Health Building
119 West Seventh Street
Bloomington, IN 47404

FIRST CLASS MAIL
RETURN SERVICE REQUESTED



Holiday Dinner, Election, Speaker, and Door Prizes on November 30!

RSVP to Vicky St. Myers at vstmyers@hotmail.com

or 812-219-4734 by Sunday, November 25

2009 MCMGA Board

- President:** Nancy White
812-824-4426 nwhite38@hotmail.com
- Vice President—Programs:** Vicky St. Myers
323-7072 vstmyers@hotmail.com
- Vice President—Education:** Jeff Schafer
325-3130 jeff.schafer1@comcast.net
- Treasurer:** Diana Young
812-339-0040 hoyoung@indiana.edu
- Secretary:** David Dunatchik
332-2331 dddunatchik@att.net
- Journalists:** Helen Hollingsworth
812-332-7313 hlhollin@indiana.edu
- Director at Large:** Herman Young
812-339-0040 hoyoung@indiana.edu
- Director—Communications:** Barbara Hays
812-332-4032 barbsblooms@comcast.net
- Director—Records:** Susan Osborne
812-825-9154
m.susan.osborne@saic.com
- Fair Board Representative:** Preston Gwinn
812-876-2999 pgwinn@bluemarble.net
- Extension Educator:** Amy Thompson
812-349-2575 afthompson@purdue.edu

In This Issue

- | | |
|------------------------------------|---|
| Holiday Dinner on November 30 | 1 |
| Coming Soon—2010 Garden Fair | 1 |
| Member News | 2 |
| New Certified Master Gardeners | 2 |
| 2010 MCMGA Slate of Officers | 3 |
| Volunteer at WFIU Fund Drive | 3 |
| Turf 101: Why Fertilize Now? | 4 |
| England & Its Gardens | 4 |
| WonderGarden Receives Award | 5 |
| Prevent Late Blight Next Year Now | 5 |
| T. C. Steele Sponsors Writer Event | 6 |
| Renew Your MCMGA Membership | 6 |
| Fall Clean-up | 6 |
| Compost Your Leaves! | 6 |
| Volunteer Opportunities | 7 |